

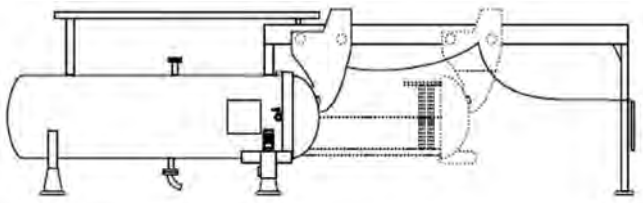
RETRACTABLE BUNDLE

HORIZONTAL PRESSURE LEAF FILTER SYSTEMS

This filter system has been designed with a retractable bundle. The bundle with the installed pressure filter leaf elements can be moved in and out of the filter body without the system being displaced.

FEATURES AND BENEFITS

- The retractable bundle makes it easy and safe to access the pressure filter leaf element for maintenance and cleaning.
- The pressure filter leaves are positioned vertically making cake discharge easy.
- The pressure filter leaf element is built with reinforced binding around its full circumference to protect the rim should manual removal be required, ensuring the filter leaf durability.



Retractable bundle.

The shell doesn't move; the bundle with filter elements move in and out of the shell.

