

# HFH1

## HIGH FLOW SINGLE CARTRIDGE FILTER HOUSING

Amafilter®'s HFH1 single high flow cartridge filter housing is specifically designed to deliver a high through put whilst occupying minimum space. The HFH1 cartridge filter housing can be used vertically or horizontally depending on the space available.

The in-line horizontally mounted housing minimizes pressure drop and is more accessible.

### FEATURES

- High-flow single cartridge filter housing.
- Designed specifically to complement the amaGuard HF-PP cartridge.
- All components are stainless steel.
- The cover is opened using a davit arm as a standard construction.
- The standard model is designed to be positioned horizontally. Vertical configuration is available on-request.
- Fewer filter elements to replace.
- Eyebolt design option allows quick and easy replacement.



### STANDARD SPECIFICATIONS

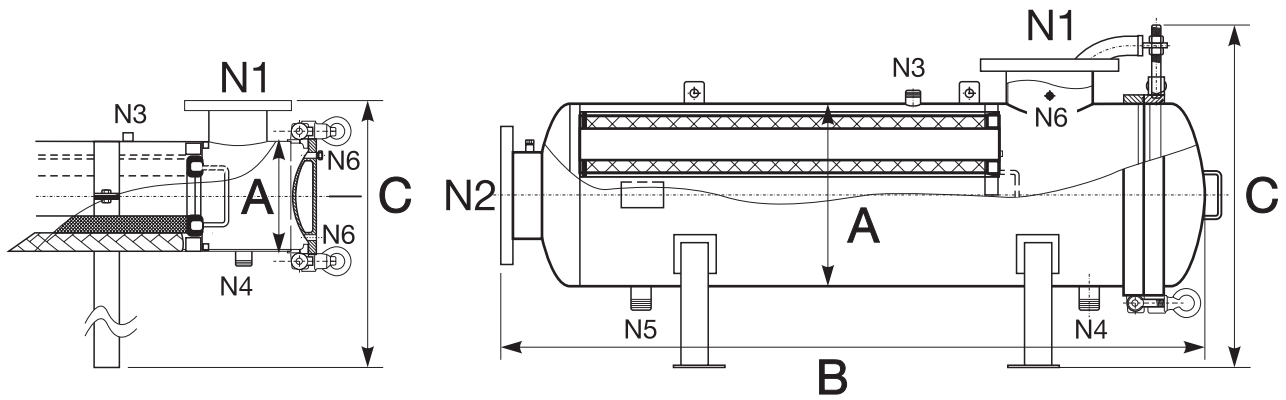
- Design: ASME
- PED 2014/68/EU: article 4 paragraph 3 (other codes on-request)
- Maximum vapor pressure: < 0.5 bar(g)
- Maximum (operating) pressure: 10 bar at 25 °C
- Maximum (operating) temperature: 90 °C
- Operating temperature: depending on the filter media and gaskets used
- Maximum operating differential pressure: 2.1 bar
- Configuration: standard model is horizontal
- Inlet/outlet with flange style
- Filter housings is equipped with legs
- Filter housing material: stainless steel 316 or stainless steel 304
- O-ring material: standard EPDM, other materials on-request such as FPM, silicone and PTFE encapsulated FPM

### CUSTOMIZED REQUIREMENTS

We understand that our customers face complex processes and a standard filter housing may not be a suitable solution.

Our team of engineers can assist you find the perfect solution to your specific requirements.

Contact us at: [www.amafiltration.com/contact-us/](http://www.amafiltration.com/contact-us/)



### DIMENSIONAL INFORMATION

| Model | A   | B    | C   | N1    | N2    |
|-------|-----|------|-----|-------|-------|
|       | mm  | mm   | mm  |       |       |
| HFH1  | 216 | 1460 | 688 | DN100 | DN100 |

Space required for changing cartridges is length B plus cartridge length.  
 Dimensions are for reference only. Use dimensional drawing for installation purposes.  
 Subject to technical alteration without prior notice.

| Mark | Description                   |
|------|-------------------------------|
| N1   | Inlet                         |
| N2   | Outlet                        |
| N3   | Vent                          |
| N4   | Dirt drain                    |
| N5   | Clean drain                   |
| N6   | 2x Pressure gauge (dirt side) |

### ORDERING INFORMATION

|               |                             |                                  |                          |                       |
|---------------|-----------------------------|----------------------------------|--------------------------|-----------------------|
| <b>HFH</b>    | <b>1</b>                    | <b>40</b>                        | <b>S</b>                 | <b>4F</b>             |
| <b>Series</b> | <b>Number of Cartridges</b> | <b>Cartridge Length</b>          | <b>Material</b>          | <b>Inlet / Outlet</b> |
| HFH           | 1                           | 20 = 20"<br>40 = 40"<br>60 = 60" | A = SS 304<br>S = SS 316 | 4F = DN100            |



# HFH2-19

## HIGH-FLOW MULTI-CARTRIDGE FILTER HOUSING

Amafilter®'s HFH2-19 high-flow multi-cartridge filter housing is specifically designed to deliver with a high throughput whilst occupying minimum space. The HFH2-19 cartridge filter housings can be installed vertically or horizontally depending on the space available.

The in-line horizontally mounted housing minimizes pressure drop and is more accessible.

### FEATURES

- High-flow single cartridge filter housing.
- Designed specifically to complement the amaGuard HF-PP cartridge.
- All components are stainless steel.
- The cover is opened using a davit arm as a standard construction.
- The standard model is designed to be positioned horizontally. Vertical configuration is available on-request.
- Fewer filter elements to replace.
- Eyebolt design option allows quick and easy replacement.



### STANDARD SPECIFICATIONS

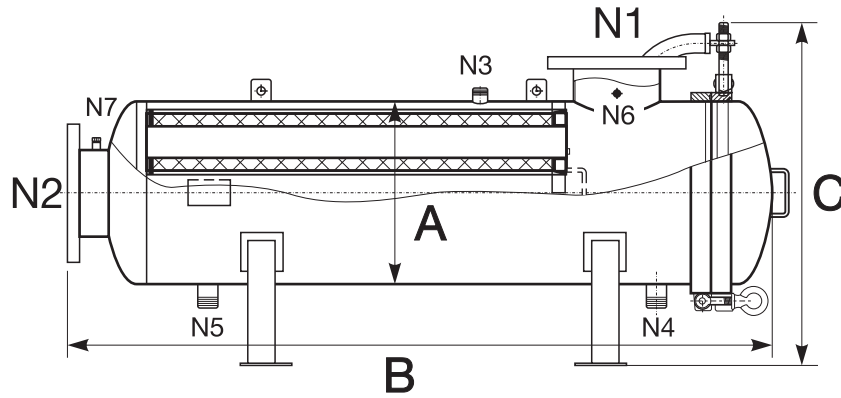
- Design: ASME
- PED 2014/68/EU: article 4 paragraph 3 (other codes on-request)
- Maximum vapor pressure: < 0.5 bar(g)
- Maximum (operating) pressure: 10 bar at 25 °C
- Maximum (operating) temperature: 90 °C
- Operating temperature: depending on the filter media and gaskets used
- Maximum operating differential pressure: 2.1 bar
- Configuration: standard model is horizontal
- Inlet/outlet with flange style
- Filter housings is equipped with legs
- Filter housing material: stainless steel 316 or stainless steel 304
- O-ring material: standard EPDM, other materials on-request such as FPM, silicone and PTFE encapsulated FPM

### CUSTOMIZED REQUIREMENTS

We understand that our customers face complex processes and a standard filter housing may not be a suitable solution.

Our team of engineers can assist you find the perfect solution to your specific requirements.

Contact us at: [www.amafiltration.com/contact-us/](http://www.amafiltration.com/contact-us/)



## DIMENSIONAL INFORMATION

| Model | A    | B    | C    | N1    | N2    |
|-------|------|------|------|-------|-------|
|       | mm   | mm   | mm   |       |       |
| HFH2  | 406  | 1666 | 797  | DN100 | DN100 |
| HFH3  | 456  | 1730 | 852  | DN125 | DN125 |
| HFH4  | 508  | 1821 | 898  | DN150 | DN150 |
| HFH5  | 558  | 1881 | 951  | DN150 | DN150 |
| HFH7  | 610  | 1996 | 1001 | DN200 | DN200 |
| HFH9  | 710  | 2044 | 1101 | DN200 | DN200 |
| HFH12 | 812  | 2102 | 1207 | DN250 | DN250 |
| HFH15 | 916  | 2247 | 1357 | DN300 | DN300 |
| HFH17 | 966  | 2284 | 1409 | DN300 | DN300 |
| HFH19 | 1016 | 2326 | 1459 | DN350 | DN350 |

| Mark | Description                 |
|------|-----------------------------|
| N1   | Inlet                       |
| N2   | Outlet                      |
| N3   | Vent                        |
| N4   | Dirt drain                  |
| N5   | Clean drain                 |
| N6   | Pressure gauge (dirt side)  |
| N7   | Pressure gauge (clean side) |

Space required for changing cartridges is length B plus cartridge length.  
 Dimensions are for reference only. Use dimensional drawing for installation purposes.  
 Subject to technical alteration without prior notice.

## ORDERING INFORMATION

|               |  |                         |                          |  |
|---------------|--|-------------------------|--------------------------|--|
| <b>HFH</b>    | <b>4</b>                               | <b>60</b>               | <b>S</b>                 | <b>8F</b>  |
| <b>Series</b> | <b>Number of Cartridges</b>            | <b>Cartridge Length</b> | <b>Material</b>          | <b>Inlet / Outlet</b>  |
| HFH           | 2, 3, 4, 5,<br>7, 9, 12, 15,<br>17, 19 | 40 = 40"<br>60 = 60"    | A = SS 304<br>S = SS 316 | 6F = DN150<br>8F = DN200<br>10F = DN250<br>12F = DN300<br>14F = DN350<br>16F = DN400<br>18F = DN450<br>20F = DN500 |

