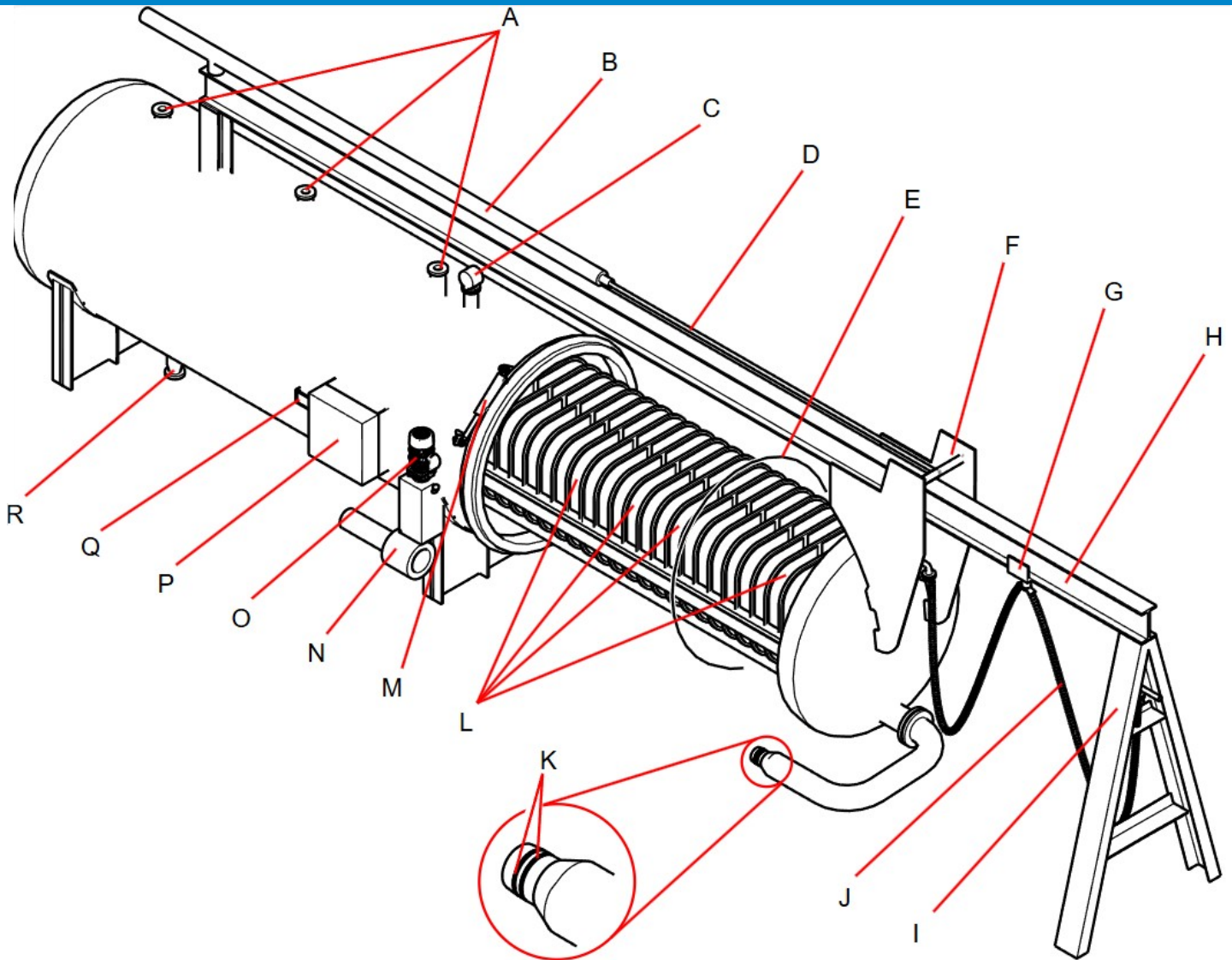


Horizontal Pressure Leaf Filter

Dry cake discharge




A	Steam inlet	G	Steam hose trolley	M	Hydraulic cylinder bayonet ring
B	Hydraulic cylinder	H	Top beam	N	Steam heated coupling
C	Pressure gauze	I	A-frame	O	Electric motor hydraulic pump
D	Plunger	J	Steam hose	P	Control box
E	Door gasket	K	Manifold o-rings	Q	Name plate
F	Trolley	L	Pressure filter leaf	R	Tank drain

Horizontal Pressure Leaf Filter

Regular maintenance

It is essential to regularly service and maintain pressure leaf filter systems as over time they will suffer from natural wear and tear. Regular cleaning and scraping of pressure filter leaves can also contribute to damage. When regular maintenance is not carried out, these factors can lead to significant process inefficiencies, resulting in increased maintenance interventions and higher operational costs.

Description code	Spare Part	Inspection	Maintenance when required
E	Door gasket	When opening filter	Replace if needed
J	Steam hose	Every 6 months	Replace if needed
K	Manifold O-rings	When opening filter	Replace if needed
M	Hydraulic cylinder bayonet ring	Every 6 months	Change seals or replace
C	Pressure gauge	Every 6 months	Replace if needed
L	Pressure filter leaves O-rings	With every exchange	Replace
M	Hydraulic cylinder Retraction	Every 6 months	Change seals or replace


amafilter
 Filtration Group®
 Filtration Group BV - The Netherlands
 www.filtrationgroup.com
 Tel: +31 (0)573-297777

MODEL MODELL MODÈLE CE

MANUFACTURER HERSTELLER FABRICANT

SERIAL NO. FABRIK NR. NO. DE FABR. YEAR BUILT BAUJAHR ANNEE DE FABR.

CHAMBER RAUM ENCEINTE

MAX. ALLOWABLE PRESSURE MAX. ZULÄSSIGER DRUCK PRESSION MAX. ADMISSIBLE PS bar

MAX./MIN. ALLOWABLE TEMPERATURE MAX./MIN. ZULÄSSIGER TEMPERATUR TS TEMPERATURE MAX./MIN. ADMISSIBLE °C

VOLUME VOLUMEN V L

TEST PRESSURE PRÜFDRUCK PRESSION D'ESSAI PT bar

Model identification plate

To request spare parts for your pressure filter leaf system, please provide Amafilter® with the filter system model and serial. This information can be obtained by checking the identification plate attached to the equipment (see enclosed drawing) or consult the equipment manual.

The information contained in this document does not replace the information contained in the Pressure Filter Leaf System Operation Manual, it has been put together as a generic guide, suitable for most existing dry discharge filter systems. In the event of any discrepancies between this instruction and that contained in the equipment manual, the one in the manual must be considered the correct version.