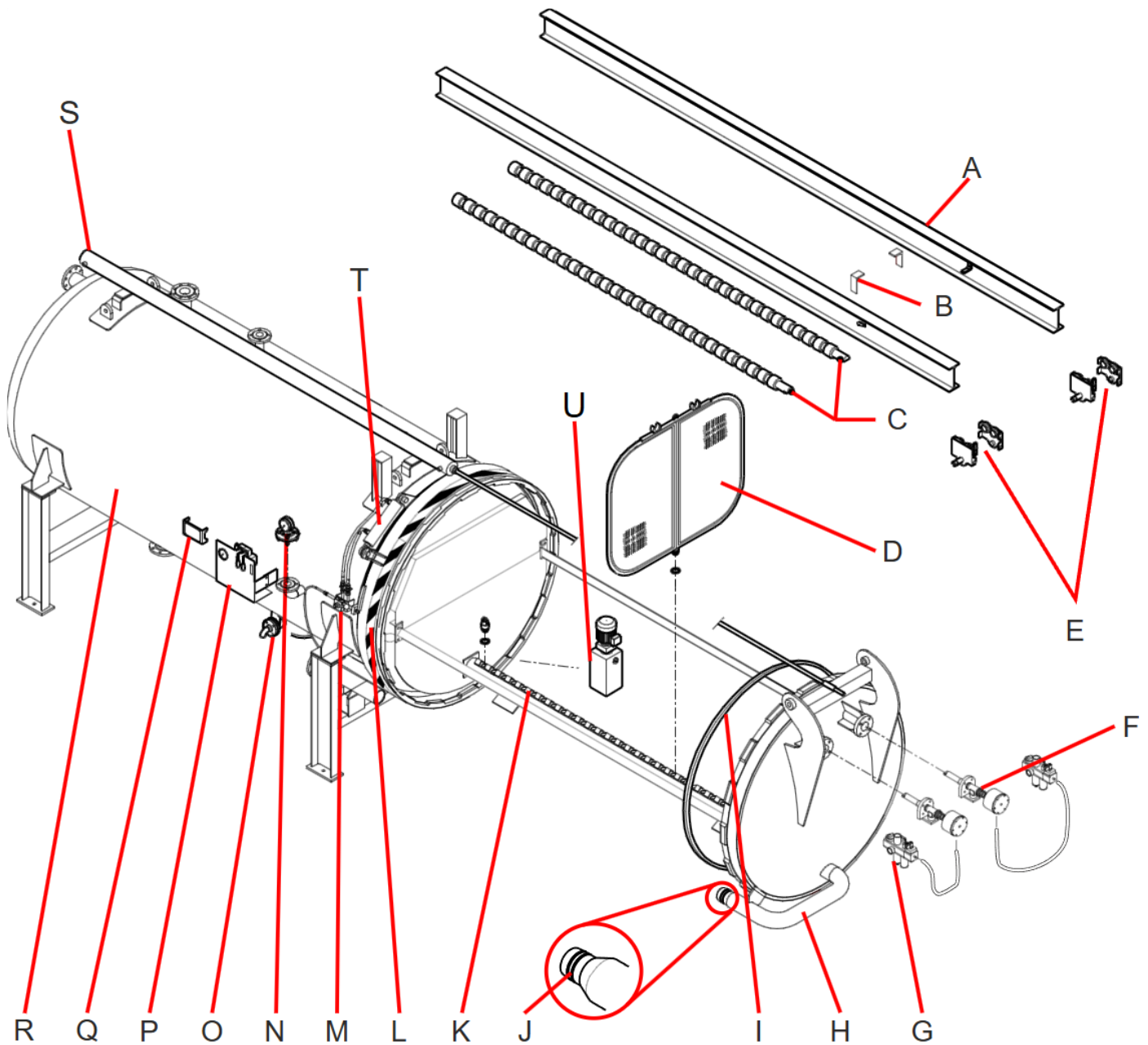


# Retractable Bundle filter

Dry cake discharge



A	Top beam	H	Manifold pipe	O	Safety valve
B	End stop	I	Door gasket	P	Hydraulic control panel
C	Vibrator rod	J	Manifold O-rings	Q	Nameplate
D	Pressure filter leaves	K	Side beams	R	Filter vessel
E	Trolley 4x	L	Bayonet closure	S	Retraction cylinder
F	Vibrator unit	M	Safety valve lever	T	Clampring cylinder
G	Air supply unit	N	Pressure gauge	U	Hydraulic compact unit

# Retractable Bundle filter

It is essential to regularly service and maintain pressure leaf filter systems as over time they will suffer from natural wear and tear. Regular cleaning and scraping of pressure filter leaves can also contribute to damage. When regular maintenance is not carried out, these factors can lead to significant process inefficiencies, resulting in increased maintenance interventions and higher operational costs.

Description code	Spare Part	Inspection	Maintenance when required
G	Air Supply Unit	Every 6 month	Change the seals if needed
G	Check the lubrication of the air unit	Once a month	Refill the lubricator with oil if needed
G	Check air filter	Once a month	Clean filter
I	Door gasket	When opening filter	Replace if needed
U	Hydraulic motor & pump	Every 6 months	Replace if needed
L	Hydraulic cylinder bayonet ring	Every 6 months	Change seals or replace
S	Hydraulic cylinder Retraction	Every 6 months	Change seals or replace
F	Vibrator Unit	Every 3 months	Change parts if needed
F	Counter nut/ closing nut vibrator set	Once a month	Replace if needed
F	Vibrator seal	Every 6 months	Replace seal set when there is a leakage
D	Pressure Filter Leaves O'rings	With every exchange	Replace
N	Pressure gauge	Every 6 months	Replace if needed

amafilter  
Filtration Group

Filtration Group BV - The Netherlands  
www.filtrationgroup.com  
Tel: +31 (0)573-297777

MODEL MODELL MODÈLE  CE

MANUFACTURER HERSTELLER FABRICANT  
Filtration Group BV - The Netherlands

SERIAL NO. FABRIK NO. NO. DE FABR.  YEAR BUILT BAUJAHR ANNEE DE FABR.

CHAMBER RAUM ENCEINTE

MAX. ALLOWABLE PRESSURE MAX. ZULÄSSIGER DRUCK PRESSION MAX. ADMISSIBLE PS bar

MAX./MIN. ALLOWABLE TEMPERATURE MAX./MIN. ZULÄSSIGER TEMPERATUR TS TEMPERATURE MAX./MIN. ADMISSIBLE °C

VOLUME VOLUMEN V L

TEST PRESSURE PRÜFDRUCK PRESSION D'ESSAI PT bar

## Model identification plate

To request spare parts for your pressure filter leaf system, please provide Amafilter® with the filter system model and serial. This information can be obtained by checking the identification plate attached to the equipment (see enclosed drawing) or consult the equipment manual.

The information contained in this document does not replace the information contained in the Pressure Filter Leaf System Operation Manual, it has been put together as a generic guide, suitable for most existing dry discharge filter systems. In the event of any discrepancies between this instruction and that contained in the equipment manual, the one in the manual must be considered the correct version.

27/11/2025